



Historical Background

In 1850 this area was largely an undeveloped hillside overlooking a valley of marshy land and ponds across to the steep opposite hillside that was Saint John. A few very wealthy people with commercial interests had built their solitary homes and private roads among the green forest across the hilltops.

Beginning in 1853 with the city's first railway development in the valley Saint John saw a future of travel and transport by steam locomotives. Ordinary businessmen and workers looked to the forested hillsides as a place for their new homes. Twenty years later the Intercolonial Railway staff and workers preferred residences close to their work. By the 1880s these streets are where they built their houses.

Mount Pleasant was Saint John's first suburb away from the noise and dirt of the city. Here business owners and professional men lived side by side and street by street with the employees they needed to run their operations. It was a separate community where the men left in the morning for work and returned home to their families in the evening.

New Brunswick and Canadian Registers of Historic Places

In 2004 the New Brunswick Register of Historic Places was established as an online listing of provincial historic sites and local histories places. Places on the New Brunswick Register are also listed on the Canadian Register of Historic Places, which lists formally recognized historic places throughout Canada.

These registers were established through a federal, provincial, territorial partnership and serve as a tool to identify and promote historic places. Numerous historic places in Saint John are listed on both Registers so that historic landmarks in neighbourhoods and communities can be viewed online.

The New Brunswick Register of Historic Places can be accessed at www.historicplaces.gnb.ca, and the Canadian Register of Historic Places at www.historicplaces.ca

Questions about Historic Property

If you have any questions about your historic property in Saint John, contact the City's Heritage Development staff at 658-2865. The Heritage program operates out of the City's Planning & Development Department and focuses on the stewardship of the built heritage of Saint John.

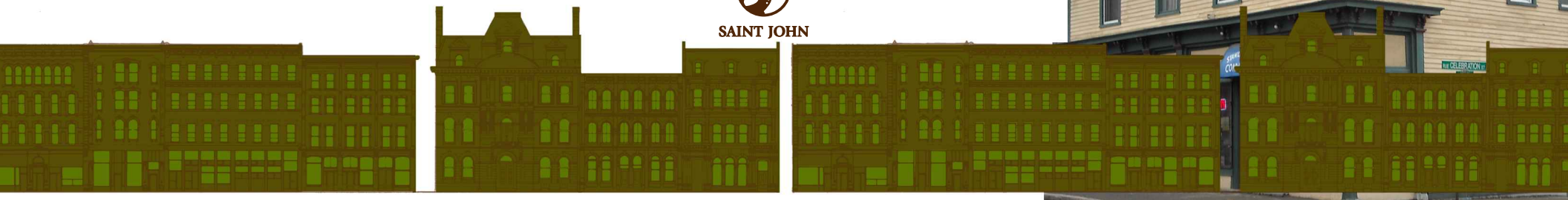
The City of Saint John is a participant in the Province of New Brunswick's Historic Places Program, funded through the Historic Places Initiative (HPI). New Brunswick gratefully acknowledges the contribution of the Government of Canada in supporting its participation in HPI.



MOUNT PLEASANT AREA *Walking Tour* OF HISTORIC PLACES



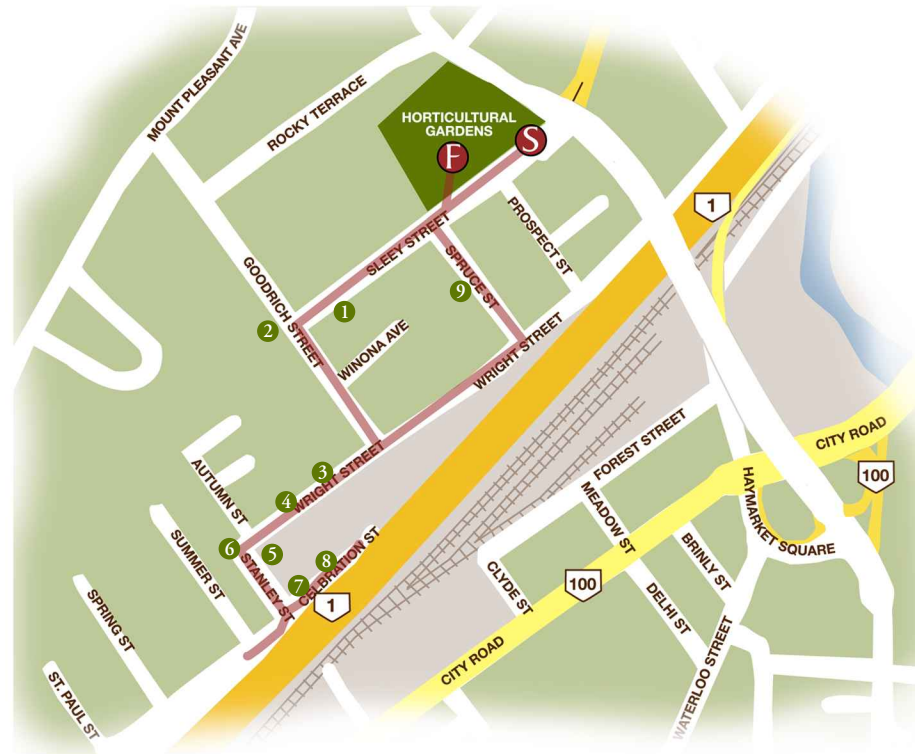
SAINT JOHN



SOME HISTORIC HOUSES ON THIS WALK



- 1 17 Seely Street, residence of Edward Goodwin, owner of Goodwin & Co. grocers, famous as the first importer of fresh fruit to Saint John, the Maritimes and Quebec. Craftsman style (stick variation) c. 1910
- 2 39 Goodrich Street, built for E.D.Outram, wholesale liquor dealer and insurance agent. Wood Gothic Revival, c.1893
- 3 44 - 46 Wright Street, residences first of John Bell, line checker for the Intercolonial Railway and Thomas Bell, manager of W.H. Thorne & Co. Classical Revival style, c.1880
- 4 38 Wright Street, residence of Enoch Piper, pioneer inventor of a patented refrigerator for freezing salmon that he shipped to American customers. Italianate style, c.1880
- 5 93 Stanley Street, a modest wood shingle home whose earliest known resident was a baker, Milton Whitfield McDonah. This long narrow building was inspired by Italianate design. c.1885



- 6 110 Stanley Street built for Thomas Barclay Robinson, a lawyer and Secretary-Treasurer of the European & North American Railway, the first in Saint John. Gothic Revival style, 1873
- 7 73 Stanley Street, Robert Patcell's Store, built for Robert Patcell, is still used as a commercial/residential building with the store on the ground level and a story and a half residence above. It has been important to Mount Pleasant residents since it opened. Greek Revival style, c.1879.
- 8 21-23 Celebration Street, built for James D. McKay, engine driver for the Intercolonial Railway. Colonial Revival style, c.1876
- 9 13 Spruce Street, built for Charles S. Christie, president of Christie Woodworking, a family business. American Four Square style, built during the craftsman era 1924.

